

CUSTOM INTEGRATION | 2018





We, Focal,  
strive to create sound  
equipment that honours the artist's  
musical creation and empowers you to  
feel a new dimension of the music. We want  
every nuance to be revealed with precision and  
purity. To do this, we push the limits of the current  
boundaries in sound technology, and go beyond  
the traditional approach thinking differently.  
With Focal, let the sound thrill your senses  
until you go beyond the usual perception  
of music and discover new fields  
of emotion.

LISTEN BEYOND



**“REVEAL  
THE  
INVISIBLE”**

---



For nearly four decades, Focal has been applying its unique sound signature to speaker drivers and high-end loudspeakers. We are known for our innovative approach which has given rise to exclusive technologies, and some of our loudspeakers have become world class references.

The Custom Integration Collection is an opportunity to live an entirely new experience. It will take you beyond sound, and allow you to rediscover the sensations provided by sound with unrivalled purity, reproducing the artist's original work with absolute fidelity. At the heart of the creation, music opens up a world of lost memories, of extraordinary dreams and emotions. This experience is represented by Focal's new signature 'Listen Beyond', which embodies the intention to make each moment in life a moment of intense pleasure.

Our philosophy aims at promoting our expertise 'Made in France': 100% of Focal products are designed and developed by our engineers, and our collections are made in France in our own workshops. All Focal products benefit from innovations which result from on-going research in the field of acoustics. This constant quest plunges the R&D teams further and further into the secret realms of sound and material science. This technological heritage, protected with numerous patents, ensures a sound which is clear, powerful and true to nature; to provide the best loudspeakers in each category.

The art of reproducing music is the art of creating a deeper emotional connection.



# INTEGRATION

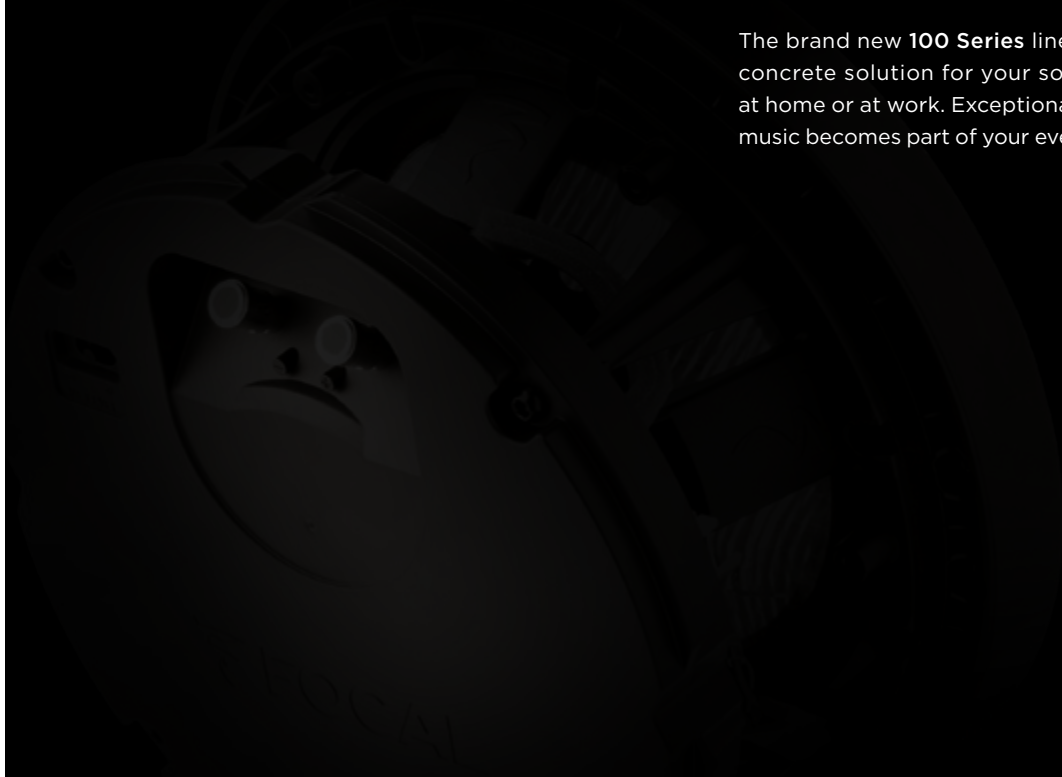
## Focal introduces CI-Fi

For more than 15 years, Focal has offered top of the range custom install products. Our project: to bring the full intensity of the Focal experience into your home with ultimate discretion. To do this, we offer the best loudspeakers for in-wall and in-ceiling systems. And this goes for all the rooms in your home, whether installed in your walls, ceiling or even outdoor. We have done this by preserving all the qualities which have contributed to the success of our products: speaker driver science and innovation, research and development, and manufacturing in France in Saint-Étienne.

The **Electra 1000 Be II** offers a high-end experience with all the exclusive technologies inherited from the Utopia line, such as the pure beryllium inverted dome tweeter or the W composite sandwich cone, providing unrivalled acoustic quality for exceptional moments of pleasure...

The **300 Series** represents the revival of custom install products. Besides the sound quality, the products in the 300 Series line feature a very innovative quick install system which doesn't require tools. Give a new ambiance to your living space...

The brand new **100 Series** line provides a concrete solution for your sound system at home or at work. Exceptionally discreet, music becomes part of your everyday life.



01

## ELECTRA

The loudspeakers disappear,  
and sound reveals itself

02

## 300 Series

A source of inspiration...

03

## 100 Series

Musicality with utmost discretion

04

## ACCESSORIES

# ELECTRA



## The loudspeakers disappear, and sound reveals itself

The Electra range embodies technological excellence at the service of the absolute finest sound: Focal's core values in just a few words. This product offer is a truly compact and invisible alternative for a traditional audio system for your home. The sophisticated design of this line enables it to compete with high-end loudspeakers. It inherits its characteristics and performance from the Focal classic Home Audio line, in particular Utopia. The source of the sound's clarity and the finesse of the details is beryllium, a robust material used for the tweeter.

These sound reinforcement solutions are built-in systems which perfectly integrate your interior, and are designed to provide high-definition audio without altering the original architecture. Sound spatialisation was studied closely in order to deliver exceptional acoustics to your environment, regardless of the listening position within the room.

Perfect for meeting the expectations of music lovers and cinema enthusiasts, the 3-way in-wall Electra Be loudspeakers can be installed horizontally or vertically, either as an in-wall loudspeaker or mounted to the wall, so that they perfectly adapt to all kinds of set-ups, particularly an exceptional Home Cinema installation. The loudspeakers disappear, and sound reveals itself...







The loudspeakers disappear, and sound reveals itself

# ELECTRA



Music at its best is invisible. With the Electra line technological excellence meets ultimate discretion. Let yourself be stunned by every detail and experience movies with a home cinema system, without seeing it.

Refined detail and exceptional sound: Electra allows you to immerse yourself into a home cinema experience with a difference.



HIGH  
END



SUBTLETY

# ELECTRA TECHNOLOGIES



## 'W' SANDWICH CONE

The "W" composite sandwich cone was designed to ensure a perfect optimisation of the frequency response curve thanks to the total control of three key parameters: lightness, rigidity and damping. In terms of sound, the "W" composite sandwich cone provides totally transparent sound and very low distortion.



## BERYLLIUM TWEETER

The rigidity of beryllium is so high that it's the only metal that can scratch glass. This is why it's the material of choice for tweeter cones! Its price - 50 times more expensive than gold - means that it's reserved for those with the highest expectations in terms of acoustics. Today, the beryllium tweeter has been integrated into our top end lines.



### READY-TO-PAINT

The grille is ready to paint to ensure optimal integration into your home.



### EDGELESS

Edgeless, built-in loudspeakers, making them even less noticeable.



### MAGNETIC GRILLES

The grilles are magnetic, so that they are easy to mount to the loudspeakers.



### EXCELLENCE

Excellence is universal in the Electra line: the music will reveal all its secrets and all its nuances with this line of high-end built-in loudspeakers.



# ELECTRA IW 1003 Be

## 6 1/2" (16.5CM) MIDBASS

W cone woofer.  
Exclusive composite sandwich.  
Unequaled rigidity and neutrality.

## 6 1/2" (16.5CM) PASSIVE RADIATOR

W cone.  
Very low bass distortion.  
Excellent power handling.

## PURE BERYLLIUM TWEETER

Ultra-wide response from 2kHz to 40kHz.  
High-efficiency: 95dB / 1W / 1m.

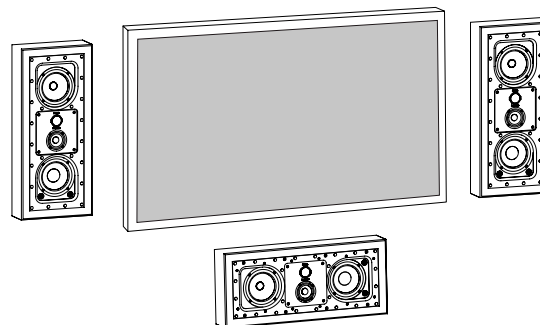
## 3" (8CM) MIDRANGE

W cone.  
Exclusive composite sandwich.  
Optimized phase geometry.

## ADJUSTABLE ALUMINUM MIDRANGE AND TWEETER SUPPORT

For vertical and horizontal use.

## HOME-CINEMA CONFIGURATION





**Electra  
IW1003 Be**

**Electra  
IW1002 Be**

**Electra  
IW1002**

**Electra  
IC1002**

Type	In-wall - 3-way	In-wall - 2-way	In-wall - 2-way	In-ceiling - 2-way
Speakers	6 1/2" (165mm) "W" passive radiator 6 1/2" (165mm) "W" 3" (80mm) "W" midrange 1 1/16" (27mm) Be tweeter	6 1/2" (165mm) "W" midbass 1 1/16" (27mm) Be tweeter	6 1/2" (165mm) "W" midbass 1" (25mm) Al/Mg tweeter	6 1/2" (16.5cm) "W" midbass. 1" (25mm) Al/Mg inverted dome tweeter
Frequency response (±3dB)	49Hz - 40kHz	60Hz - 40kHz	60Hz - 30.5kHz	60Hz - 30.5kHz
Sensitivity (2.83V/1m)	90dB	88dB	88dB	88dB
Nominal impedance	8Ω	8Ω	8Ω	8Ω
Amp. recommended power	25 - 240W	25 - 150W	25 - 150W	25 - 150W
Adjustments	Tweeter: -3dB / 0dB / +3dB Midrange: -3dB / 0dB / +3dB	Tweeter: -3dB / 0dB / +3dB	Tweeter: -3dB / 0dB / +3dB	Tweeter: -3dB / 0dB / +3dB
Dimensions (H x L x D)	27 9/16" x 11 3/4" x 4" (700x298x102mm)	16 3/8" x 11 3/4" x 4" (415x298x102mm)	16 3/8" x 11 3/4" x 4" (415x298x102mm)	Ø10 x 3 3/4" (Ø253 x 96mm)
Cut-out dimensions (H x L)	26 3/16" x 10 5/16" (664x262mm)	14 15/16" x 10 5/16" (379 x 262mm)	14 15/16" x 10 5/16" (379 x 262mm)	Ø8 11/16" (221mm)
Depth from wall	3 7/8" (99mm)	3 7/8" (99mm)	3 7/8" (99mm)	3 5/8" (92mm)
Weight	22lbs (10kg)	13.6lbs (6.2kg)	13.6lbs (6.2kg)	4.6lb (2.1kg)
Packaging	Per unit	Per unit	Per unit	Per unit







# 300 SERIES



## A source of inspiration...

The loudspeakers of the 300 Series line are the fruit of more than three years of research and development. Installation has been completely re-designed. Disregarding the past and the systems currently on the market, our engineers started from scratch with just one challenge in mind: being able to install our product without tools!



Our engineers explored numerous possibilities, each one more creative than the other, and built an inestimable amount of prototypes before coming up with the EQ! system (Easy Quick Install). Now, thanks to these ingenious systems, the products in this line can be installed in less than a minute!

Throughout our history, sound quality has always been key! All the speaker drivers are equipped with a natural flax sandwich cone with superior acoustic qualities, and which are made at our production workshops in Saint-Étienne.

The products of the 300 Series line are extremely versatile and can be used for: Hi-Fi systems, built-in Home Cinema systems, or to enhance classic hi-fi systems, particularly the loudspeakers from the Aria 900 line.

The flagship product of the line, 300 IW LCR6, represents an innovation in the optimisation of sound coverage, regardless of the loudspeaker's position within the room. An acoustics study into the sound quality and precision of the stereo image was carried out, which proved to be a true innovation for cinema buffs.



## EASY QUICK INSTALL

Easy Quick Install system.  
No tools required.

A source of inspiration...

# 300 SERIES



The built-in loudspeakers of the 300 Series were designed to be invisible and to give a new dimension to your music, whether in a stereo or Home Cinema set-up. The ultimate goal was to make installation easier without requiring tools. The design of these loudspeakers ensures excellent sound coverage throughout your home with utmost harmony.

Through its precise and natural sound, this line is ideal for creating an all-encompassing atmosphere; opening up a world with an unprecedented depth of emotion. A new source of inspiration reveals itself to you every day...



PRECISION



DETAILS

# 300 SERIES TECHNOLOGIES



## FLAX CONE

The 'F' cone is composed of very high-quality flax fibres sandwiched between by two thin layers of glass fibre. It satisfies all the criteria required for high-fidelity cones: it is light, to ensure good dynamics, rigid to control the bass, and it offers excellent damping properties to produce sound that is both neutral and natural.



## AL/MG TWEETER

This unique solution combines multiple advantages. The impulse response highlights the very short settling time and the ultra-fast damping. The linearity of the frequency response curve is also remarkable and ensures perfect neutrality.



### READY-TO-PAINT

The grille is ready to paint to ensure optimal integration into your home.



### EDGELESS

Edgeless, built-in loudspeakers, making them even less noticeable.



### MAGNETIC GRILLES

The grilles are magnetic, so that they are easy to mount to the loudspeakers.



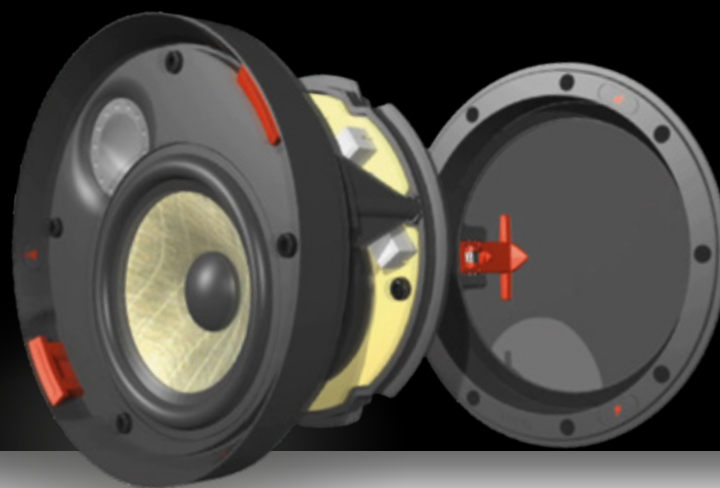
### ADJUSTABLE TWEETER

The tweeter can be adjusted horizontally and vertically to target the listening point.

# 300 SERIES

## ICW4 / ICW6 / ICW8

---



### 2 GRILLE MODELS

---

Delivered with square and circular front grilles.



### ADJUSTABLE TWEETER

---



# 300 SERIES IW LCR6

**6 1/2" (16.5CM) FLAX CONE WOOFER**  
Controlled and articulated bass, for optimal fidelity.

**4" (10CM) FLAX CONE MIDRANGE**  
Neutrality, intelligibility and definition of vocals.

**1" AL/MG INVERTED DOME TWEETER WITH PORON® SUSPENSION**  
Treble with extreme definition and precision.

**ADJUSTABLE TWEETER LEVEL**  
(-3dB, 0dB, +3dB) and mid-range level (-2dB, 0dB, +2dB). The best performance, regardless of the acoustic environment.

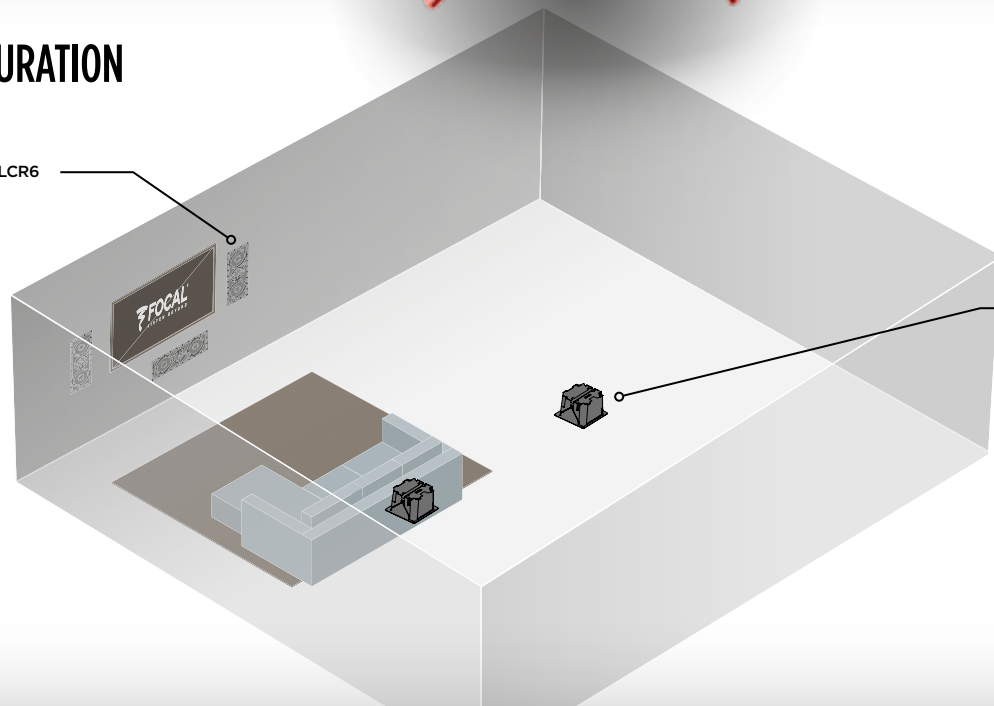
**ADJUSTABLE MID-TREBLE PLATE**  
Over 360° in 90° steps.

**EASY QUICK INSTALL, EASY AND QUICK TO INSTALL WITHOUT TOOLS**  
System compatible with walls of a width of 1/12" to 1 1/16" (12 to 32mm).



## 5.1 CONFIGURATION

IWLCR6



ICLCR5



NEW



NEW



NEW



	300 IWLCR6	300 ICLCR5	300 IW6
Type	In-wall D'Appolito 3-way	In-ceiling 3-way	in-wall 2-way
Speakers	2 x 6 <sup>1</sup> / <sub>2</sub> " (16.5cm) woofers, 4" (10cm) Flax midrange, 1" (25mm) Al/Mg inverted dome tweeter	2 x 5" (13cm) Flax woofers, 4" (10cm) Flax midrange, 1" (25mm) Al/Mg inverted dome tweeter	6 <sup>1</sup> / <sub>2</sub> " (16.5cm) flax cone woofer, 1" (25mm) Al/Mg inverted dome tweeter
Frequency response (±3dB)	40Hz - 28kHz	55Hz - 28kHz	55Hz - 28kHz
Sensitivity (2.83V/1m)	92dB	91dB	90dB
Nominal impedance	8 Ω	8 Ω	8 Ω
Amp. recommended power	50 - 150W	50 - 150W	25 - 130W
Adjustments			
Dimensions (H x L x D)	23 <sup>5</sup> / <sub>8</sub> " x 8 <sup>11</sup> / <sub>16</sub> " x 3 <sup>7</sup> / <sub>8</sub> " (600 x 220 x 98mm)	14 <sup>9</sup> / <sub>16</sub> " x 14 <sup>9</sup> / <sub>16</sub> " x 7 <sup>11</sup> / <sub>16</sub> " (370 x 370 x 195mm)	12 <sup>3</sup> / <sub>4</sub> " x 8 <sup>11</sup> / <sub>16</sub> " x 3 <sup>7</sup> / <sub>8</sub> " (323 x 220 x 98mm)
Cut-out dimensions (H x L)	22 <sup>3</sup> / <sub>8</sub> " 7 <sup>1</sup> / <sub>2</sub> " (568 x 191mm)	13 <sup>3</sup> / <sub>8</sub> " x 13 <sup>3</sup> / <sub>8</sub> " (340 x 340mm)	11 <sup>1</sup> / <sub>2</sub> " x 7 <sup>1</sup> / <sub>2</sub> " (292 x 191mm)
Depth from wall	3 <sup>11</sup> / <sub>16</sub> " (93mm)	7 <sup>1</sup> / <sub>2</sub> " (190mm)	3 <sup>11</sup> / <sub>16</sub> " (93mm)
Weight	12.4lbs (5.65kg)	16.3 lbs (7.4kg)	4.9lbs (2.25kg)
Packaging	Per unit	Per unit	Per unit







	300 ICW8	300 ICW6	300 ICW4
Type	In-wall/In-ceiling 2-way coaxial	In-wall/In-ceiling 2-way coaxial	In-wall/In-ceiling 2-way
Speakers	8" (21cm) Flax Mid-bass 1" (25mm) Al/Mg inverted dome Tweeter	6 <sup>1</sup> / <sub>2</sub> " (16.5cm) Flax Mid-bass 1" (25mm) Al/Mg inverted dome Tweeter	4" (10cm) Flax Mid-bass 1" (25mm) Al/Mg inverted dome Tweeter
Frequency response (±3dB)	48Hz - 28kHz	65Hz - 28kHz	80Hz - 28kHz
Sensitivity (2.83V/1m)	90dB	89dB	88dB
Nominal impedance	8Ω	8Ω	8Ω
Amp. recommended power	25-150W	25-130W	25-100W
Tweeter Adjustments	-3dB / 0dB / +3dB	-3dB / 0dB / +3dB	
Dimensions (H x L x D)	11 <sup>4</sup> / <sub>9</sub> x 11 <sup>4</sup> / <sub>9</sub> x 5" (299x299x127mm)	9 <sup>3</sup> / <sub>9</sub> x 9 <sup>3</sup> / <sub>9</sub> x 4 <sup>9</sup> / <sub>64</sub> " (244x244x105mm)	7 <sup>9</sup> / <sub>16</sub> x 7 <sup>9</sup> / <sub>16</sub> x 3 <sup>5</sup> / <sub>64</sub> " (192x192x98mm)
Cut-out dimensions (H x L)	Ø 10 <sup>25</sup> / <sub>64</sub> " (264mm)	Ø 8 <sup>1</sup> / <sub>2</sub> " (216mm)	Ø 6 <sup>27</sup> / <sub>64</sub> " (163mm)
Depth from wall	4 <sup>5</sup> / <sub>16</sub> " (122mm)	3 <sup>15</sup> / <sub>16</sub> " (100mm)	3 <sup>2</sup> / <sub>32</sub> " (93mm)
Weight	7.05lbs (3.2kg)	5.29 lbs (2.4kg)	2.6 lbs (1.3kg)
Packaging	Per unit	Per unit	Per unit

# 100 SERIES



## Musicality with utmost discretion

The 100 SERIES is mostly dedicated to the home audio market. These loudspeakers set themselves apart through the high-performance audio and the compact size considering their SPL. The range is destined for small- to medium-sized rooms, and for three types of use: multiple loudspeaker systems (hallways, living rooms...), stereo systems (bedrooms, kitchens...) and Home Cinema systems (in dedicated rooms or living rooms).

The 100 SERIES line is composed of three coaxial loudspeakers which can be used as both in-wall or in-ceiling loudspeakers (100 ICW5, 100 ICW6 and 100 ICW8), one coaxial in-ceiling stereo loudspeaker (100 IC6ST), one in-ceiling for Home Cinema systems (100 ICLCR5) and two products specifically intended for in-wall systems (100 IW6, 100 IWLCR5).

This new range of products remains faithful to the three quality criteria of the 300 SERIES, which are absolutely necessary in order to meet the expectations of today's consumer in terms of sound quality, design and ease of installation.

To meet the requirements in terms of sound quality, the 100 SERIES had to be innovative: in terms of the acoustics, the products are equipped with a new, more compact aluminium inverted dome tweeter and a new Polyglass cone speaker driver. The "in-ceiling" loudspeakers are equipped with a new crossover featuring an innovative architecture which improves off-axis listening. This also significantly reduces the undesired "bathroom effect" often encountered with this type of product.

By offering very compact products, thanks in particular to the unibody chassis, and round and square frameless grilles, these models will perfectly integrate your environment with utmost discretion.





Musicality with utmost discretion

# 100 SERIES



Choose discretion! The Hi-Fi loudspeaker models are available as in-wall and in-ceiling loudspeakers for your home. The products in this line will provide your interior with unexpected musicality effortlessly. Let yourself be astonished by the new possibilities they open up to you: thoroughly tested technologies, an efficient design

and ideal functions to make them easy to use and perfectly adapted for your interior.

With the 100 Series line, you will find the obvious acoustic solution which will prove its worth through its excellent efficiency in this price range.



**DISCRETION**



**TECHNOLOGY**

# 100 SERIES TECHNOLOGIES



## TROPICALISED POLYGLASS CONE

This innovation combines the excellent damping properties of paper with the high rigidity of glass. Tropicalizing the cone allows it to be installed in wet places (bathroom...).



### READY-TO-PAINT

The grille is ready to paint to ensure optimal integration into your home.



### MAGNETIC GRILLES

The grilles are magnetic, so that they are easy to mount to the loudspeakers.



## THE INVERTED DOME TWEETER

The inverted dome tweeter is fully representative of our sound signature. The major advantage is the coupling of the dome with the voice coil: the dome radiates directly in the space, with maximum efficiency. The very slight curve also provides improved space dispersion. This results in an extremely precise soundstage.



### ADJUSTABLE TWEETER

The tweeter can be adjusted horizontally and vertically to target the listening point.



### EDGELESS

Edgeless, built-in loudspeakers, making them even less noticeable.



# 100 SERIES

## IC6 ST

---

### DOUBLE TWEETER

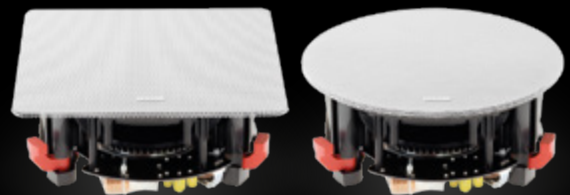
---

Double tweeter 1" (25 mm). Aluminum inverted dome tweeter. Improved sound dispersion.



### 2 GRILLE MODELS

---





# 100 SERIES IC LCR5

## 8" (21CM) PASSIVE RADIATOR

Deep frequency response in the low end.  
Deep and articulated bass.

## 5" (13CM) POLYGLASS WOOFER

Natural midrange without colouration, and rich bass.

## TWEETER ADJUSTABLE

Horizontally and vertically for focusing  
the sound on the listening point.  
Improved sound spatialisation.

## ADJUSTABLE TWEETER LEVEL

(-3dB, 0dB, +3dB). Optimisation of  
the performance according to room's  
acoustics.

## LEFT, CENTRE AND RIGHT CHANNEL SELECTOR.

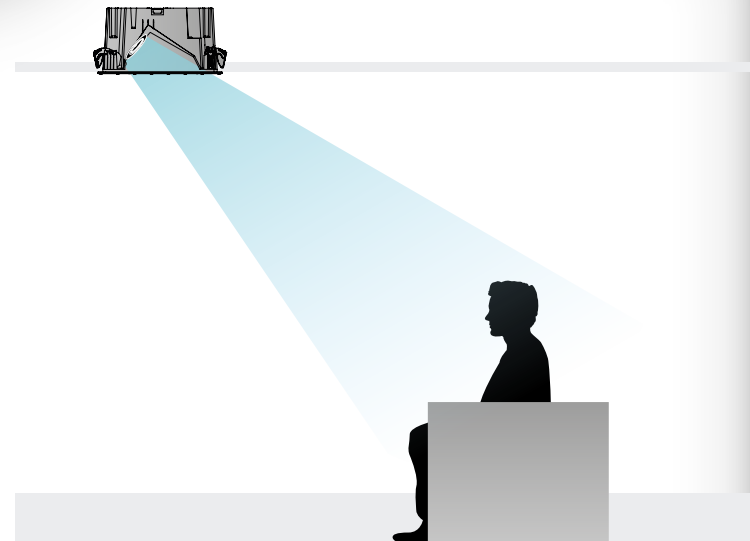
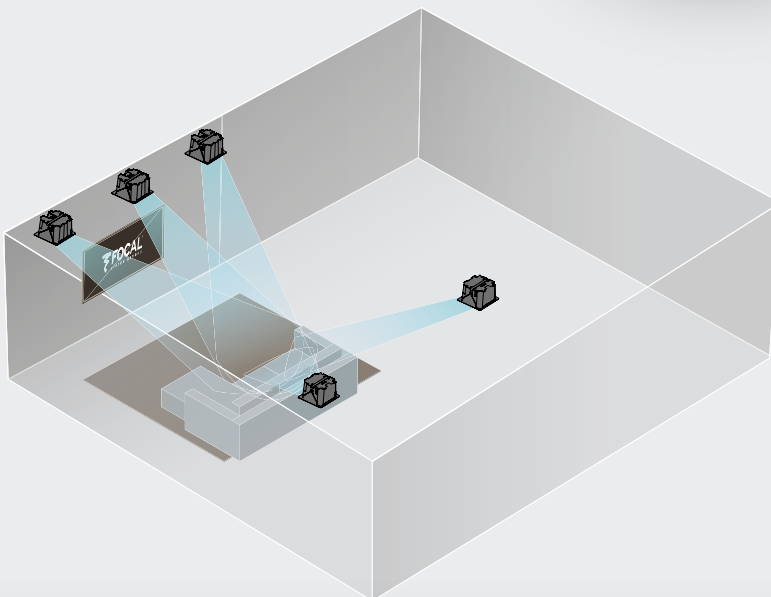
Adapts the loudspeaker's directivity curve  
to obtain the same sound, regardless of the  
position within the room.

## 1" (25MM) ALUMINUM INVERTED DOME TWEETER.

Improved sound dispersion.



## 5.1 CONFIGURATION





	100 IWLCR5	100 ICLCR5	100 IW6
Type	D'apollito In-wall 2-way	2-way in-ceiling	In-wall 2-way
Speakers	2x5" (13cm) Polyglass Midbass. 1" (25mm) Al inverted dome Tweeter	2 x 5" (13cm) Polyglass woofers, 1" (25mm) inverted dome tweeter, 8" (21cm) Polyglass passive radiator	6 <sup>1</sup> / <sub>2</sub> " (16,5cm) Polyglass Midbass 1" (25mm) Al inverted dome Tweeter
Frequency response (±3dB)	55Hz - 23kHz	65Hz - 23kHz	60Hz - 23kHz
Sensitivity (2.83V/1m)	90,5dB	92dB	89dB
Nominal impedance	8 Ω	8 Ω	8 Ω
Amp. recommended power	25 - 120W	25 - 120W	25 - 120W
Adjustments	-	-	-
Dimensions (H x L x D)	17 <sup>21</sup> / <sub>64</sub> "x6 <sup>13</sup> / <sub>16</sub> "x3 <sup>25</sup> / <sub>64</sub> " (440x173x86mm)	13 <sup>15</sup> / <sub>16</sub> " x 13 <sup>15</sup> / <sub>16</sub> " x 5 <sup>5</sup> / <sub>16</sub> " (354 x 354 x 150mm)	11 <sup>47</sup> / <sub>64</sub> "x7 <sup>43</sup> / <sub>64</sub> "x3 <sup>5</sup> / <sub>8</sub> " (298x195x92mm)
Cut-out dimensions (H x L)	16 <sup>11</sup> / <sub>32</sub> "x5 <sup>25</sup> / <sub>32</sub> " (415x147mm)	12 <sup>15</sup> / <sub>16</sub> " x 12 <sup>15</sup> / <sub>16</sub> " (328 x 328mm)	10 <sup>3</sup> / <sub>4</sub> "x6 <sup>11</sup> / <sub>16</sub> " (273x170mm)
Depth from wall	3 <sup>17</sup> / <sub>64</sub> " (83mm)	6" (152mm)	4 <sup>15</sup> / <sub>32</sub> " (88mm)
Weight	3.89lbs (2.90kg)	11.6lbs (5.3kg)	4,1lbs (1.85kg)
Packaging	Per unit	Per unit	Per unit

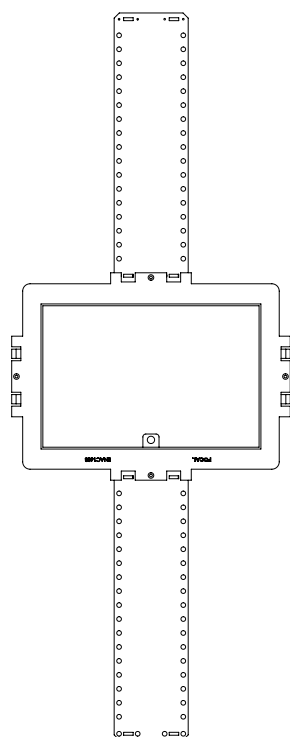




	100 IC6 ST	100 ICW8	100 ICW6	100 ICW5
Type	In-ceiling - Stereo 2-way coaxial	In-wall/In-ceiling - 2-way coaxial	In-wall/In-ceiling - 2-way coaxial	In-wall/In-ceiling - 2-way coaxial
Speakers	6 <sup>1</sup> / <sub>2</sub> " (16,5cm) Dual voice coil Polyglass Midbass. 1" (25mm) Al inverted dome Tweeter	8" (21cm) Polyglass Midbass. 1" (25mm) Al inverted dome Tweeter	6 <sup>1</sup> / <sub>2</sub> " (16,5cm) Polyglass Midbass. 1" (25mm) Al inverted dome Tweeter	5" (13cm) Polyglass Midbass. 1" (25mm) Al inverted dome Tweeter
Frequency response (±3dB)	60Hz - 23kHz	53Hz - 23kHz	62Hz - 23kHz	65Hz - 23kHz
Sensitivity (2.83V/1m)	89dB	90dB	89dB	88dB
Nominal impedance	2x8 Ω	8 Ω	8 Ω	8 Ω
Amp. recommended power	25 - 100W	25 - 150W	25 - 100W	15 - 100W
Tweeter Adjustments	-3dB / 0dB / +3dB	-3dB / 0dB / +3dB	-3dB / 0dB / +3dB	-3dB / 0dB / +3dB
Dimensions (H x L x D)	8 <sup>3</sup> / <sub>16</sub> "x8 <sup>3</sup> / <sub>16</sub> "x3 <sup>47</sup> / <sub>64</sub> " (208x208x95mm)	9 <sup>49</sup> / <sub>64</sub> "x9 <sup>49</sup> / <sub>64</sub> "x4 <sup>3</sup> / <sub>8</sub> " (248x248x111mm)	8 <sup>3</sup> / <sub>16</sub> "x8 <sup>3</sup> / <sub>16</sub> "x3 <sup>47</sup> / <sub>64</sub> " (208x208x95mm)	7 <sup>1</sup> / <sub>4</sub> "x7 <sup>1</sup> / <sub>4</sub> "x3 <sup>27</sup> / <sub>64</sub> " (184x184x87mm)
Cut-out dimensions (H x L)	Ø 7 <sup>1</sup> / <sub>4</sub> " (184mm)	Ø 8 <sup>13</sup> / <sub>16</sub> " (160mm)	Ø 7 <sup>1</sup> / <sub>4</sub> " (184mm)	Ø 6 <sup>19</sup> / <sub>64</sub> " (160mm)
Depth from wall	3 <sup>37</sup> / <sub>64</sub> " (91mm)	4 <sup>7</sup> / <sub>32</sub> " (107mm)	3 <sup>37</sup> / <sub>64</sub> " (91mm)	3 <sup>15</sup> / <sub>64</sub> " (82mm)
Weight	3.86lbs (1.75kg)	3.86lbs (1.75kg)	3.3lbs (1.50kg)	3.19lbs (1.45kg)
Packaging	Per unit	Per unit	Per unit	Per unit

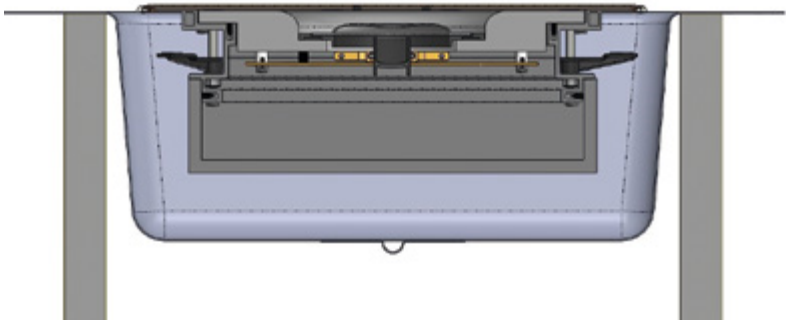
# ACCESSORIES

## Mounting Brackets



	Outside dimension	Cut-out dimensions	Depth from wall
100 ICW5	184	160	82
100 ICW6	208	184	91
100 ICW8	248	224	107
100 ICW6-ST	208	184	91
100 IW6	195 x 298	170 x 273	88
100 IWLCR5	173 x 440	147 x 415	83
100 ICLCR5	350 x 350	324,2 x 324,2	152
300 ICW4	192	162	93,4
300 ICW6	244	215	100,3
300 ICW8	299	263	121,6
300 IW6	220 x 323	191 x 292	92,5
300 IWLCR6	220 x 600	191 x 568	92,5
300 ICLCR5	370 x 370	340 x 340	190
Electra IC 1002	252,5	218,5	103,2
Electra IW 1002	298 x 415	258,5 x 375,5	99
Electra IW 1002 Be	298 x 415	258,5 x 375,5	99
Electra IW 1003 Be	290 x 700	664 x 262	99

# Fire BackCan



40mm ceramic fiber insulation  
Overall size: 478 x 482 mm

Compatible with:

100 series line	300 series line	Electra line
100 ICW 5	300 ICW 4	IC 1002
100 ICW 6	300 ICW 6	
100 ICW 8	300 IW 6	
100 IC6 ST		
100 IW 6		



# On-Wall Frames

Code	Dimension (H x L x P)	Compatible
EACCCAOW01 BR001 BRUT	427 x 310 x 116	ELECTRA 1002 ELECTRA 1002 BE
EACCCAOW01 WH001 WHITE	427 x 310 x 116	ELECTRA 1002 ELECTRA 1002 BE
EACCCAOW02 BR001 BRUT	712 x 310 x 116	ELECTRA 1003 BE
EACCCAOW02 WH001 WHITE	712 x 310 x 116	ELECTRA 1003 BE

classic loudspeakers



headphones & multimedia



car audio



studio monitors



**FOCAL**

**Focal-JMLab\* - BP 374 - 108, rue de l'Avenir - 42353 La Talaudière cedex - France - +33 (0) 477 435 700**

Focal® is a registered trademarks of Focal-JMLab\*. Non-binding pictures. Photos L'Atelier Sylvain Madelon. SCBC 180207/1 - **PC1290**  
Due to constant technological advances, Focal-JMLab® reserves its right to modify prices and specifications without notice.



**EXP - GB**  
February 2018